



# BARAJEEL TOWERS

## UNIT 109

2 Bedroom - Level 1

**Total Area: 2493.30 SQ.FT  
231.63 SQM.**



### DISCLAIMER:

All measurements are indicative and are for marketing purposes only. All efforts have been made to ensure their accuracy, however these layouts are subject to change at the discretion of the developer and should not be relied upon as final. The actual area may vary from the stated area and the developer reserves the right to make therevisions/alterations, at its absolute discretion, without any liability whatsoever.

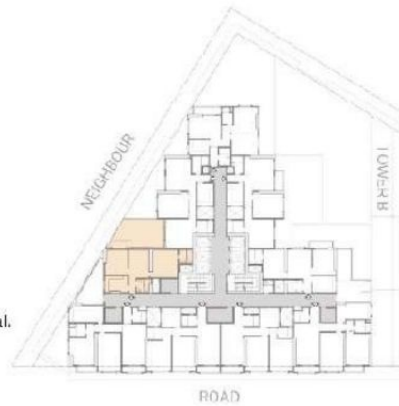


# BARAJEEL TOWERS

## UNIT 108

2 Bedroom – Level 1

**Total Area: 2119.12 SQ.FT**  
**196.87 SQM.**



### DISCLAIMER:

All measurements are indicative and are for marketing purposes only. All efforts have been made to ensure their accuracy, however these layouts are subject to change at the discretion of the developer and should not be relied upon as final. The actual area may vary from the stated area and the developer reserves the right to make therevisions/alterations, at its absolute discretion, without any liability whatsoever.

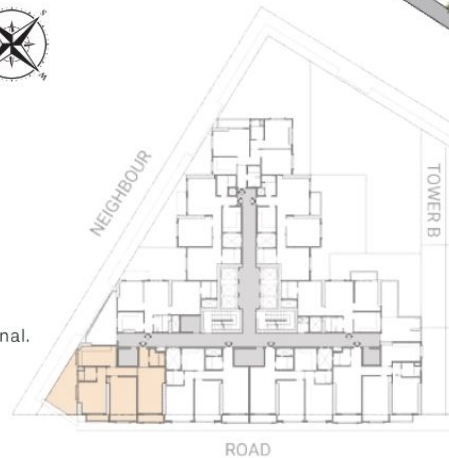


# BARAJEEL TOWERS

## UNIT 107

2 Bedroom - Level 1

**Total Area: 2722.58 SQ.FT  
252.94 SQM.**



### DISCLAIMER:

All measurements are indicative and are for marketing purposes only. All efforts have been made to ensure their accuracy, however these layouts are subject to change at the discretion of the developer and should not be relied upon as final. The actual area may vary from the stated area and the developer reserves the right to make therevisions/alterations, at its absolute discretion, without any liability whatsoever.

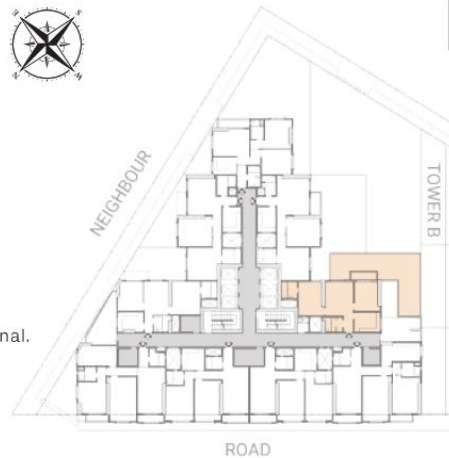


# BARAJEEL TOWERS

## UNIT 103

2 Bedroom - Level 1

**Total Area: 2490.63 SQ.FT**  
**231.39 SQM.**



### DISCLAIMER:

All measurements are indicative and are for marketing purposes only. All efforts have been made to ensure their accuracy, however these layouts are subject to change at the discretion of the developer and should not be relied upon as final. The actual area may vary from the stated area and the developer reserves the right to make therevisions/alterations, at its absolute discretion, without any liability whatsoever.

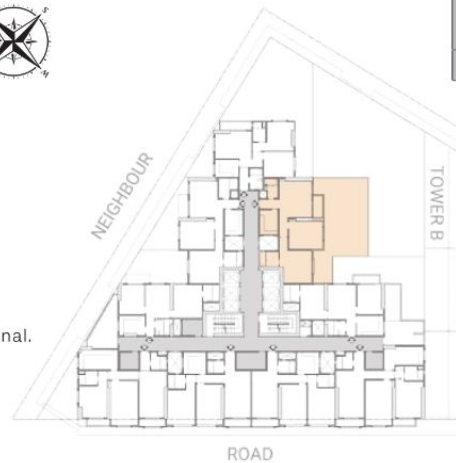
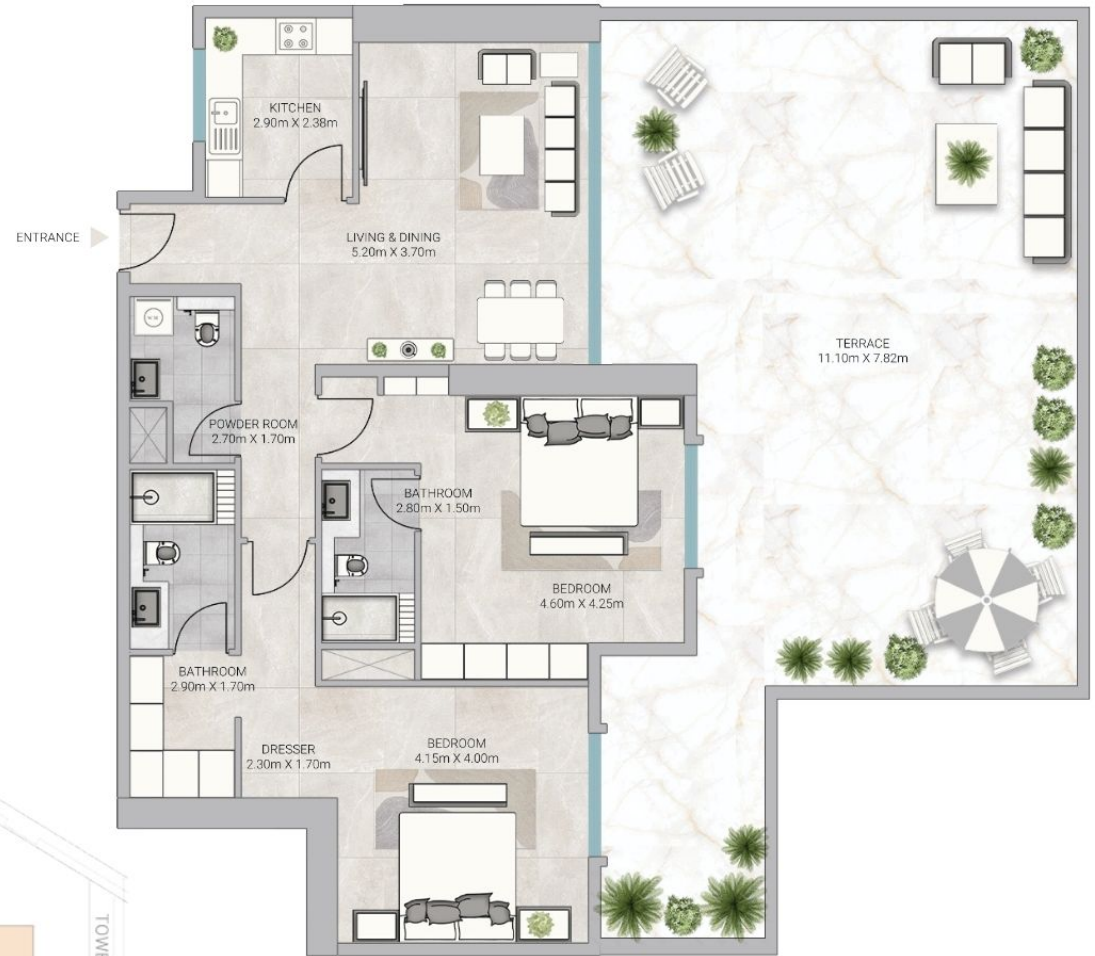


# BARAJEEL TOWERS

## UNIT 102

2 Bedroom - Level 1

**Total Area: 3319.73 SQ.FT  
308.41 SQM.**



### DISCLAIMER:

All measurements are indicative and are for marketing purposes only. All efforts have been made to ensure their accuracy, however these layouts are subject to change at the discretion of the developer and should not be relied upon as final. The actual area may vary from the stated area and the developer reserves the right to make therevisions/alterations, at its absolute discretion, without any liability whatsoever.

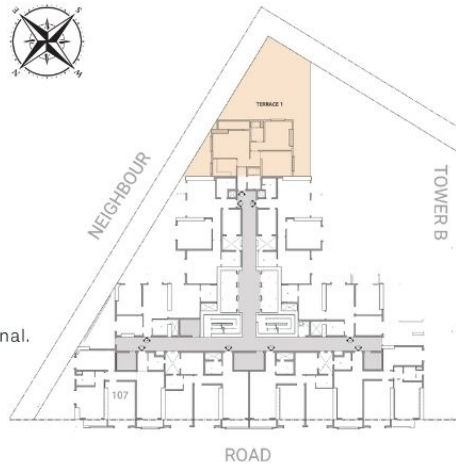


# BARAJEEL TOWERS

## UNIT 101

2 Bedroom - Level 1

**Total Area: 4426.13 SQ.FT  
411.20 SQM.**



### DISCLAIMER:

All measurements are indicative and are for marketing purposes only. All efforts have been made to ensure their accuracy, however these layouts are subject to change at the discretion of the developer and should not be relied upon as final. The actual area may vary from the stated area and the developer reserves the right to make therevisions/alterations, at its absolute discretion, without any liability whatsoever.

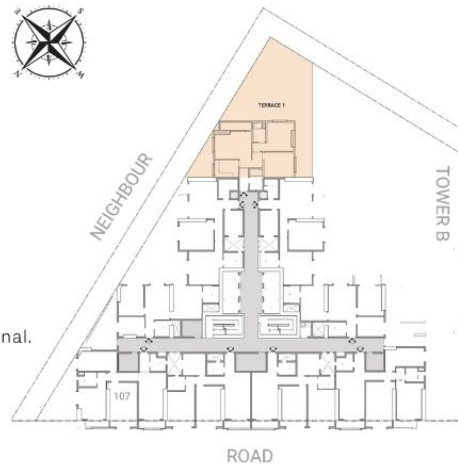


# BARAJEEL TOWERS

## UNIT 101

2 Bedroom - Level 1

**Total Area: 4426.13 SQ.FT  
411.20 SQM.**



### DISCLAIMER:

All measurements are indicative and are for marketing purposes only. All efforts have been made to ensure their accuracy, however these layouts are subject to change at the discretion of the developer and should not be relied upon as final. The actual area may vary from the stated area and the developer reserves the right to make therevisions/alterations, at its absolute discretion, without any liability whatsoever.

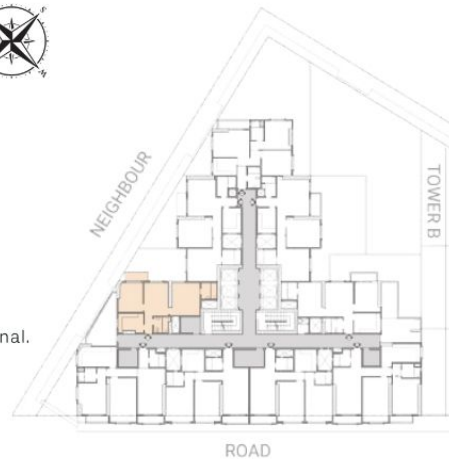


# BARAJEEL TOWERS

## UNIT 08

2 Bedroom - Level Typical

**Total Area: 1434.91 SQ.FT**  
**133.31 SQM.**



### DISCLAIMER:

All measurements are indicative and are for marketing purposes only. All efforts have been made to ensure their accuracy, however these layouts are subject to change at the discretion of the developer and should not be relied upon as final. The actual area may vary from the stated area and the developer reserves the right to make therevisions/alterations, at its absolute discretion, without any liability whatsoever.

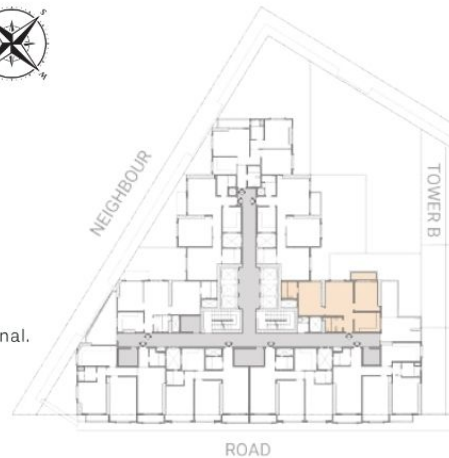


# BARAJEEL TOWERS

## UNIT 03

2 Bedroom - Level Typical

**Total Area: 1480.60 SQ.FT  
137.55 SQM.**



### DISCLAIMER:

All measurements are indicative and are for marketing purposes only. All efforts have been made to ensure their accuracy, however these layouts are subject to change at the discretion of the developer and should not be relied upon as final. The actual area may vary from the stated area and the developer reserves the right to make therevisions/alterations, at its absolute discretion, without any liability whatsoever.

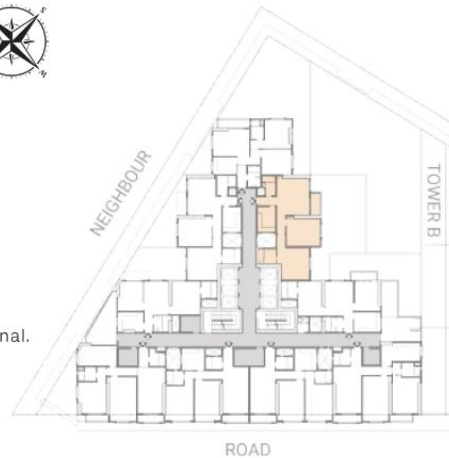


# BARAJEEL TOWERS

## UNIT 02

2 Bedroom - Level Typical

**Total Area: 1900.15 SQ.FT  
176.53 SQM.**



### DISCLAIMER:

All measurements are indicative and are for marketing purposes only. All efforts have been made to ensure their accuracy, however these layouts are subject to change at the discretion of the developer and should not be relied upon as final. The actual area may vary from the stated area and the developer reserves the right to make therevisions/alterations, at its absolute discretion, without any liability whatsoever.



# BARAJEEL TOWERS

## UNIT 01

2 Bedroom - Level Typical

**Total Area: 1650.36 SQ.FT  
153.32 SQM.**



### DISCLAIMER:

All measurements are indicative and are for marketing purposes only. All efforts have been made to ensure their accuracy, however these layouts are subject to change at the discretion of the developer and should not be relied upon as final. The actual area may vary from the stated area and the developer reserves the right to make therevisions/alterations, at its absolute discretion, without any liability whatsoever.



# BARAJEEL TOWERS

## UNIT 09

2 Bedroom - Level Typical

**Total Area: 1791.10 SQ.FT**  
**166.40 SQM.**



### DISCLAIMER:

All measurements are indicative and are for marketing purposes only. All efforts have been made to ensure their accuracy, however these layouts are subject to change at the discretion of the developer and should not be relied upon as final. The actual area may vary from the stated area and the developer reserves the right to make therevisions/alterations, at its absolute discretion, without any liability whatsoever.



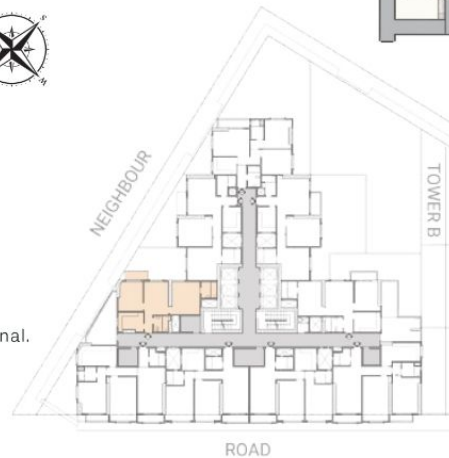


# BARAJEEL TOWERS

## UNIT 08

2 Bedroom - Level Typical

**Total Area: 1434.91 SQ.FT**  
**133.31 SQM.**



### DISCLAIMER:

All measurements are indicative and are for marketing purposes only. All efforts have been made to ensure their accuracy, however these layouts are subject to change at the discretion of the developer and should not be relied upon as final. The actual area may vary from the stated area and the developer reserves the right to make therevisions/alterations, at its absolute discretion, without any liability whatsoever.

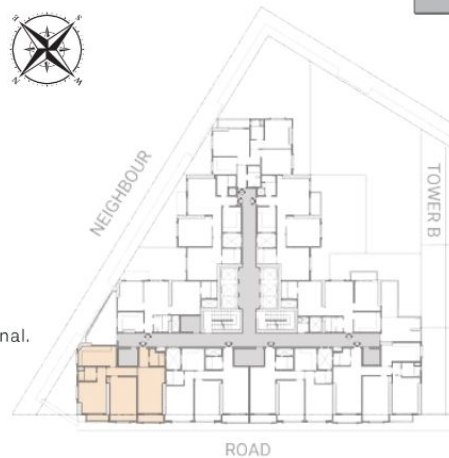


# BARAJEEL TOWERS

## UNIT 07

2 Bedroom - Level Typical

**Total Area: 2079.91 SQ.FT**  
**193.23 SQM.**



### DISCLAIMER:

All measurements are indicative and are for marketing purposes only. All efforts have been made to ensure their accuracy, however these layouts are subject to change at the discretion of the developer and should not be relied upon as final. The actual area may vary from the stated area and the developer reserves the right to make therevisions/alterations, at its absolute discretion, without any liability whatsoever.

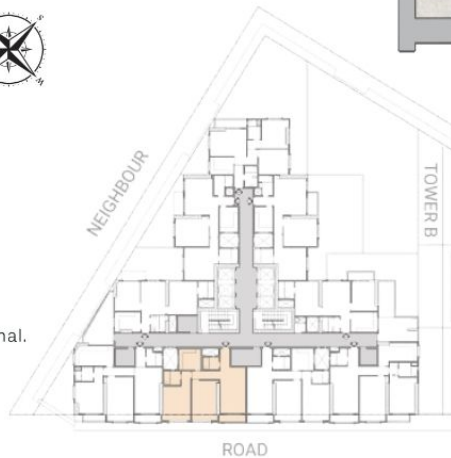


# BARAJEEL TOWERS

## UNIT 06

2 Bedroom - Level Typical

**Total Area: 1860.63 SQ.FT  
172.86 SQM.**



### DISCLAIMER:

All measurements are indicative and are for marketing purposes only. All efforts have been made to ensure their accuracy, however these layouts are subject to change at the discretion of the developer and should not be relied upon as final. The actual area may vary from the stated area and the developer reserves the right to make therevisions/alterations, at its absolute discretion, without any liability whatsoever.

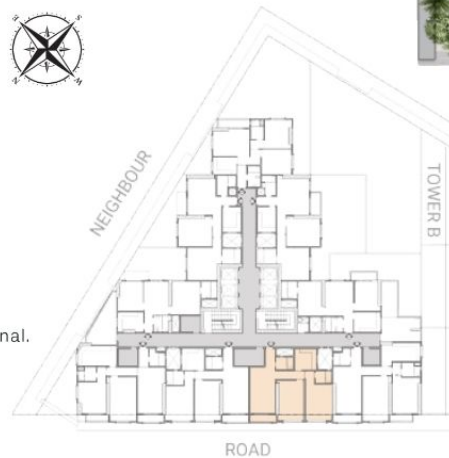


# BARAJEEL TOWERS

## UNIT 05

2 Bedroom - Level Typical

**Total Area: 1859.30 SQ.FT**  
**172.73 SQM.**



### DISCLAIMER:

All measurements are indicative and are for marketing purposes only. All efforts have been made to ensure their accuracy, however these layouts are subject to change at the discretion of the developer and should not be relied upon as final. The actual area may vary from the stated area and the developer reserves the right to make therevisions/alterations, at its absolute discretion, without any liability whatsoever.



# BARAJEEL TOWERS

## UNIT 04

2 Bedroom - Level Typical

**Total Area: 2129.77 SQ.FT  
197.86 SQM.**



### DISCLAIMER:

All measurements are indicative and are for marketing purposes only. All efforts have been made to ensure their accuracy, however these layouts are subject to change at the discretion of the developer and should not be relied upon as final. The actual area may vary from the stated area and the developer reserves the right to make therevisions/alterations, at its absolute discretion, without any liability whatsoever.



# BARAJEEL TOWERS

## UNIT 03

2 Bedroom - Level Typical

**Total Area: 1480.60 SQ.FT**  
**137.60 SQM.**



### DISCLAIMER:

All measurements are indicative and are for marketing purposes only. All efforts have been made to ensure their accuracy, however these layouts are subject to change at the discretion of the developer and should not be relied upon as final. The actual area may vary from the stated area and the developer reserves the right to make therevisions/alterations, at its absolute discretion, without any liability whatsoever.

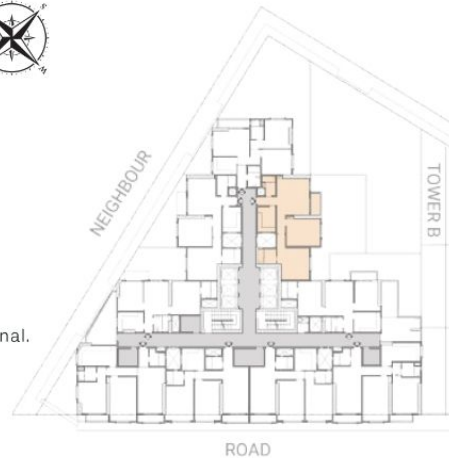


# BARAJEEL TOWERS

## UNIT 02

2 Bedroom - Level Typical

**Total Area: 1900.15 SQ.FT**  
**176.53 SQM.**



### DISCLAIMER:

All measurements are indicative and are for marketing purposes only. All efforts have been made to ensure their accuracy, however these layouts are subject to change at the discretion of the developer and should not be relied upon as final. The actual area may vary from the stated area and the developer reserves the right to make therevisions/alterations, at its absolute discretion, without any liability whatsoever.



# BARAJEEL TOWERS

## UNIT 01

2 Bedroom - Level Typical

**Total Area: 1579.15 SQ.FT  
146.71 SQM.**



### DISCLAIMER:

All measurements are indicative and are for marketing purposes only. All efforts have been made to ensure their accuracy, however these layouts are subject to change at the discretion of the developer and should not be relied upon as final. The actual area may vary from the stated area and the developer reserves the right to make therevisions/alterations, at its absolute discretion, without any liability whatsoever.



# BARAJEEL TOWERS

## UNIT 05

2 Bedroom - Level Typical

**Total Area: 1853.13 SQ.FT  
172.16 SQM.**

# B



### DISCLAIMER:

All measurements are indicative and are for marketing purposes only. All efforts have been made to ensure their accuracy, however these layouts are subject to change at the discretion of the developer and should not be relied upon as final. The actual area may vary from the stated area and the developer reserves the right to make therevisions/alterations, at its absolute discretion, without any liability whatsoever.



# BARAJEEL TOWERS

## UNIT 06

2 Bedroom - Level Typical

**Total Area: 1859.80 SQ.FT  
172.78 SQM.**



### DISCLAIMER:

All measurements are indicative and are for marketing purposes only. All efforts have been made to ensure their accuracy, however these layouts are subject to change at the discretion of the developer and should not be relied upon as final. The actual area may vary from the stated area and the developer reserves the right to make therevisions/alterations, at its absolute discretion, without any liability whatsoever.



# BARAJEEL TOWERS

## UNIT 07

2 Bedroom - Level Typical

**Total Area: 1907.83 SQ.FT  
177.33 SQM.**



### DISCLAIMER:

All measurements are indicative and are for marketing purposes only. All efforts have been made to ensure their accuracy, however these layouts are subject to change at the discretion of the developer and should not be relied upon as final. The actual area may vary from the stated area and the developer reserves the right to make therevisions/alterations, at its absolute discretion, without any liability whatsoever.

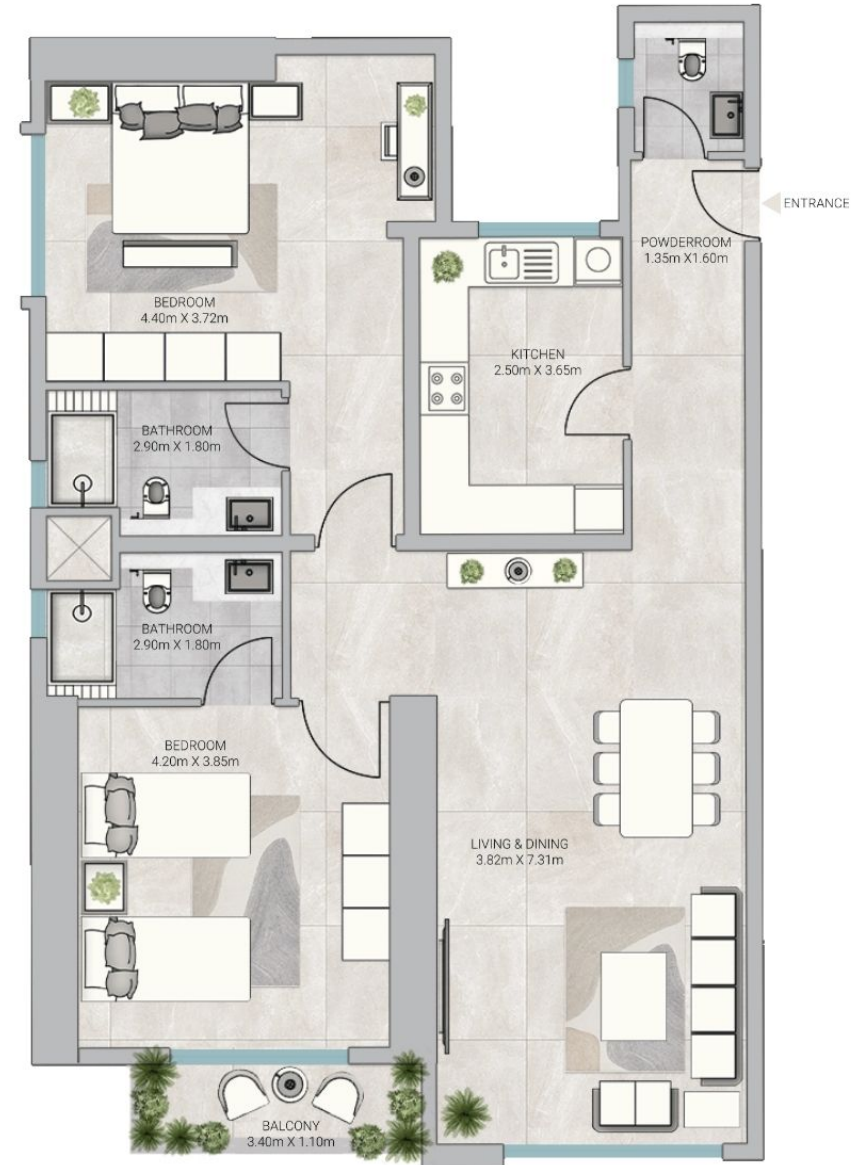


# BARAJEEL TOWERS

## UNIT 08

2 Bedroom - Level Typical

**Total Area: 1897.65 SQ.FT  
176.30 SQM.**



### DISCLAIMER:

All measurements are indicative and are for marketing purposes only. All efforts have been made to ensure their accuracy, however these layouts are subject to change at the discretion of the developer and should not be relied upon as final. The actual area may vary from the stated area and the developer reserves the right to make therevisions/alterations, at its absolute discretion, without any liability whatsoever.



# BARAJEEL TOWERS

## UNIT 09

2 Bedroom - Level Typical

**Total Area: 1719.73 SQ.FT  
159.77 SQM.**



### DISCLAIMER:

All measurements are indicative and are for marketing purposes only. All efforts have been made to ensure their accuracy, however these layouts are subject to change at the discretion of the developer and should not be relied upon as final. The actual area may vary from the stated area and the developer reserves the right to make therevisions/alterations, at its absolute discretion, without any liability whatsoever.



# BARAJEEL TOWERS

## UNIT 101

2 Bedroom - Level 1

**Total Area: 3376.09 SQ.FT**  
**313.65 SQM.**



### DISCLAIMER:

All measurements are indicative and are for marketing purposes only. All efforts have been made to ensure their accuracy, however these layouts are subject to change at the discretion of the developer and should not be relied upon as final. The actual area may vary from the stated area and the developer reserves the right to make therevisions/alterations, at its absolute discretion, without any liability whatsoever.



# BARAJEEL TOWERS

## UNIT 109

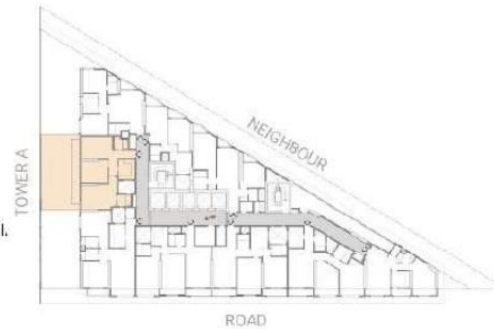
2 Bedroom – Level 1

**Total Area: 2699.66 SQ.FT  
250.81 SQM.**



### DISCLAIMER:

All measurements are indicative and are for marketing purposes only. All efforts have been made to ensure their accuracy, however these layouts are subject to change at the discretion of the developer and should not be relied upon as final. The actual area may vary from the stated area and the developer reserves the right to make therevisions/alterations, at its absolute discretion, without any liability whatsoever.



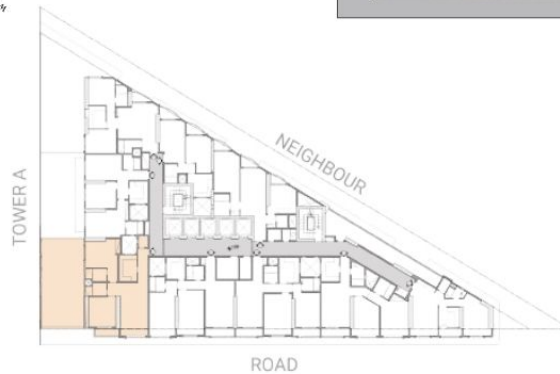
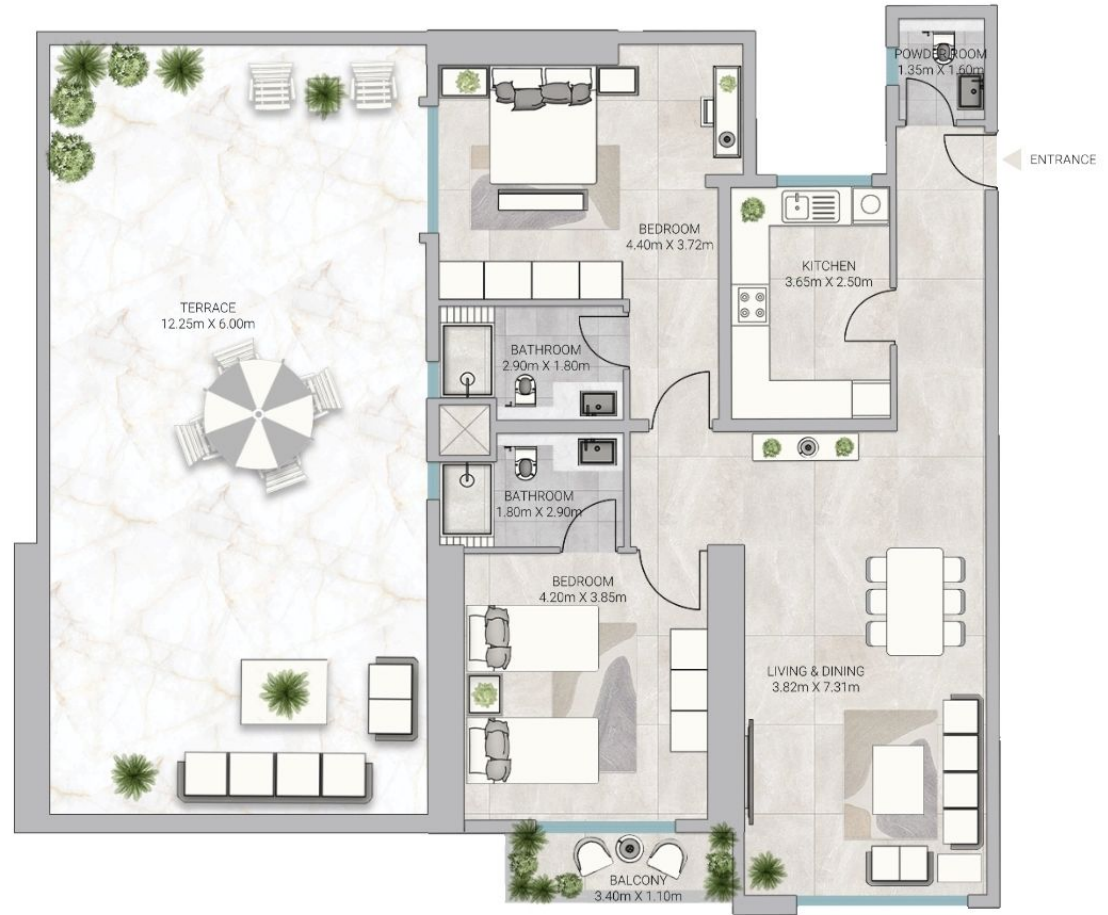


# BARAJEEL TOWERS

## UNIT 108

2 Bedroom - Level 1

**Total Area: 3143.47 SQ.FT  
292.04 SQM.**



### DISCLAIMER:

All measurements are indicative and are for marketing purposes only. All efforts have been made to ensure their accuracy, however these layouts are subject to change at the discretion of the developer and should not be relied upon as final. The actual area may vary from the stated area and the developer reserves the right to make therevisions/alterations, at its absolute discretion, without any liability whatsoever.