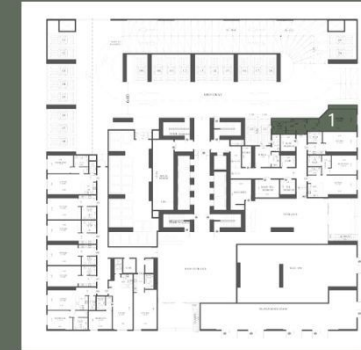
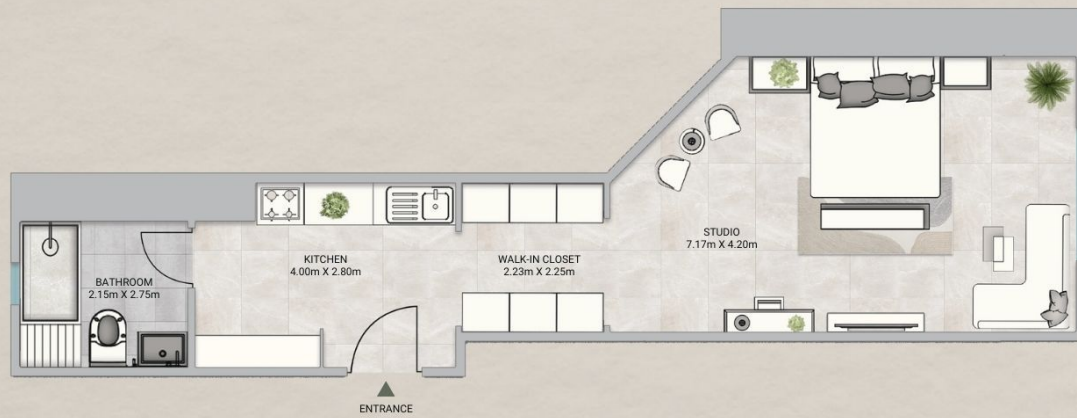


# SKY GARDENS

TOWER



## UNIT G01

Studio - Level Ground

Gross Area: 773.03 SQ.FT  
71.82 SQM.

### Disclaimer:

1. All materials, finishes, dimensions and drawings are approximate.
2. Actual suite area may vary from the stated area.
3. Drawings are not to scale.
4. Information is subject to change without notice.
5. The Developer reserves the right to make revisions/alterations without any liability whatsoever.

# SKY GARDENS

TOWER



UNIT G02

Studio - Level Ground

Gross Area: 623.61 SQ.FT  
57.94 SQM.

**Disclaimer:**

- 1.** All materials, finishes, dimensions and drawings are approximate.
- 2.** Actual suite area may vary from the stated area.
- 3.** Drawings are not to scale.
- 4.** Information is subject to change without notice.
- 5.** The Developer reserves the right to make revisions/alterations without any liability whatsoever.

# SKY GARDENS

TOWER



UNIT G04

Studio - Level Ground

Gross Area: 707.59 SQ.FT  
65.74 SQM.

Disclaimer:  
1. All materials, finishes, dimensions and drawings are approximate. 2. Actual suite area may vary from the stated area. 3. Drawings are not to scale. 4. Information is subject to change without notice.  
5. The Developer reserves the right to make revisions/alterations without any liability whatsoever.

# SKY GARDENS

TOWER



## UNIT G07

Studio - Level Ground

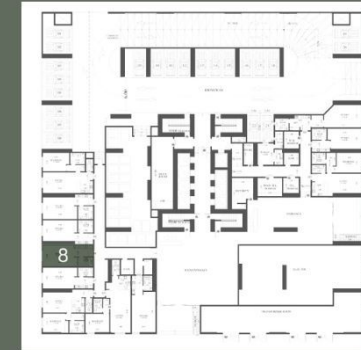
Gross Area: 605.22 SQ.FT  
56.23 SQM.

**Disclaimer:**

1. All materials, finishes, dimensions and drawings are approximate.
2. Actual suite area may vary from the stated area.
3. Drawings are not to scale.
4. Information is subject to change without notice.
5. The Developer reserves the right to make revisions/alterations without any liability whatsoever.

# SKY GARDENS

TOWER



UNIT G08

Studio - Level Ground

Gross Area: 611.45 SQ.FT  
56.81 SQM.

**Disclaimer:**

1. All materials, finishes, dimensions and drawings are approximate.
2. Actual suite area may vary from the stated area.
3. Drawings are not to scale.
4. Information is subject to change without notice.
5. The Developer reserves the right to make revisions/alterations without any liability whatsoever.

# SKY GARDENS

TOWER



UNIT G09

Studio - Level Ground

Gross Area: 642.31 SQ.FT  
59.67 SQM.

**Disclaimer:**

1. All materials, finishes, dimensions and drawings are approximate.
2. Actual suite area may vary from the stated area.
3. Drawings are not to scale.
4. Information is subject to change without notice.
5. The Developer reserves the right to make revisions/alterations without any liability whatsoever.